

# Community to Grid

Jordy Aalders  
Saskia Buunk  
Wimco Veerman

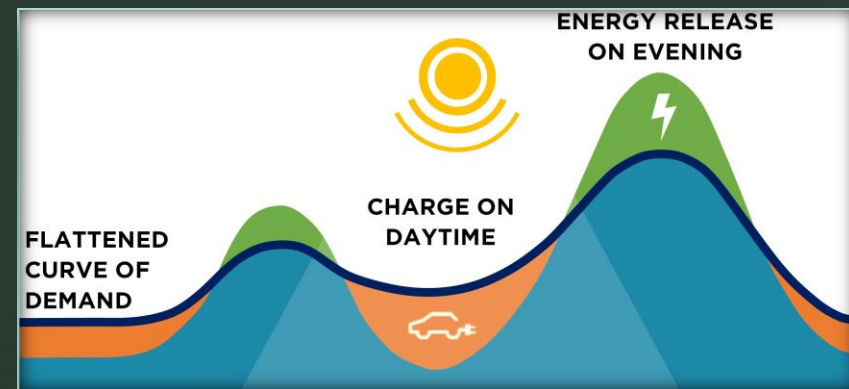
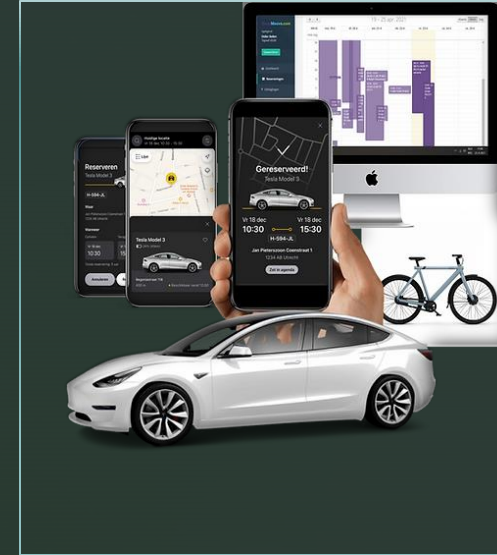
# Imagine

Imagine you're living in a flat with your neighbors, you share your cars, your city is cleaner, way more green, more plants and less cars. You don't hear as much traffic as you used to do. The city where you live is your city, not that of your car. You are happier all because of one thing: our concept



# What is vehicle to grid?

- Energy spikes
- Green energy
- Vehicle's
- Grid



# Targeted users

- Inner city Eindhoven (for now)
- Young urban professionals
- Low to middle incomes (live in flats)



# Our vision, the idea

- Vehicle to grid
  - Connecting the community
  - Lowering the energy spikes
  - Pownest (wind, solar)
  - Vehicle's
  - Less parking spaces
  - Shared mobility
  - Open hub for other users
  - More nature
  - Less traffic
  - Zero emission
- 
- Partners



# What makes it interesting

- A normal car is only used for 1 hour a day on average
- The power nest generates 140MWh a year
- The building uses 380 MWh a year
- Power nest supply depends on weather conditions
- Building demand doesn't follow supply
- 32 cars can supply the building for a full day
- Heavy use of shared mobility in this area

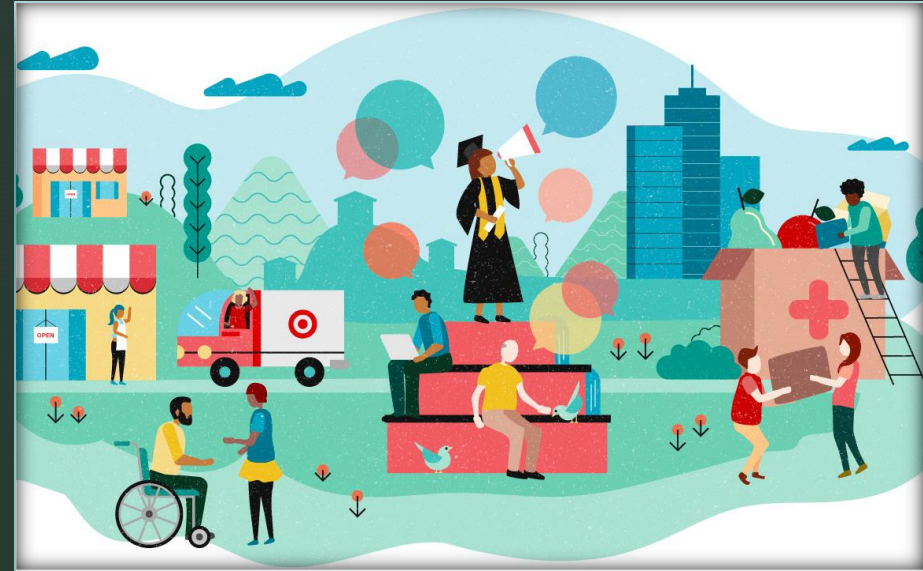
## Sources:

- trudo.nl
- Nibud.nl
- lbispower.eu
- Incharge.vattenfall.nl
- Eindhoven.nl
- Heatmap sharing
- Ev-database.nl
- [Gezondheid is het motief voor duurzame mobiliteit - Over Morgen](#)



# Future vision

- Change of behavior
- More efficient use of energy
- Livable city
- Other use cases: shopping centre, residential areas, owners associations, community centres



This change is necessary!